



2023

About Us

Every Climber constantly redefines the boundaries of what is possible through effort, passion, failure and a lot of hard work.

We are routesetters, climbers and, most of all, dreamers, and we want ember to shape and support the world we love.

Ember Holds strives to provide routestters with the tools they need to realize their unique vision and push athletes in the neverneding quest for self-perfection.

Hold making, just like climbing, is all about that constant need for improvement.

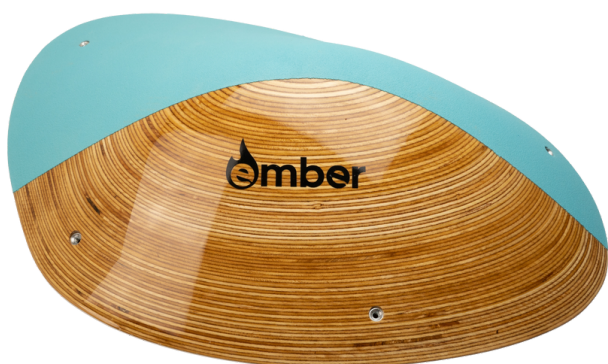
For us this means designing ergonomic, innovative shapes, choosing the best quality materials (be it wood, fiberglass or polyurethane) and ensuring product quality thorough attention to detail, search for innovation, relentless control and constant listening to the feedback coming from our users.

These are just few of the reasons why, at launch, Ember Holds is at the forefront of the Italian climbing holds industry.



The image features two identical wooden discs, likely made of plywood, arranged side-by-side on a dark grey surface. Each disc has a curved, teal-colored overlay that covers approximately the top half of its face. The word 'amber' is printed in a black, lowercase, sans-serif font on the wooden portion of each disc, oriented vertically. The teal overlay has four small, circular holes drilled through it, two on each disc. The wooden surface shows natural grain patterns and some minor wear or scratches.

MAGIC WOOD



Rose

Grip	Sloper
Size	XL
# Holds	2
Level	Hard
Dimensions	67x47h10



Eleanor

Grip	Sloper
Size	XL
# Holds	2
Level	Hard
Dimensions	72x44h13



Penelope

Grip	Sloper
Size	XL
# Holds	2
Level	Medium
Dimensions	62x42h8



Sophia

Grip	Sloper
Size	XL
# Holds	2
Level	Hard
Dimensions	54x52h10





Pearl

Grip	Sloper
Size	L
# Holds	2
Level	Medium
Dimensions	54x32h10



Elsa

Grip	Sloper
Size	L
# Holds	2
Level	Easy
Dimensions	54x28h8



Audrey

Grip	Pinch
Size	L
# Holds	2
Level	Hard
Dimensions	49x34h10



Olivia

Grip	Sloper
Size	M
# Holds	3
Level	Medium
Dimensions	40x29h7





Juliet

Grip	Sloper
Size	M
# Holds	3
Level	Hard
Dimensions	38x30h8



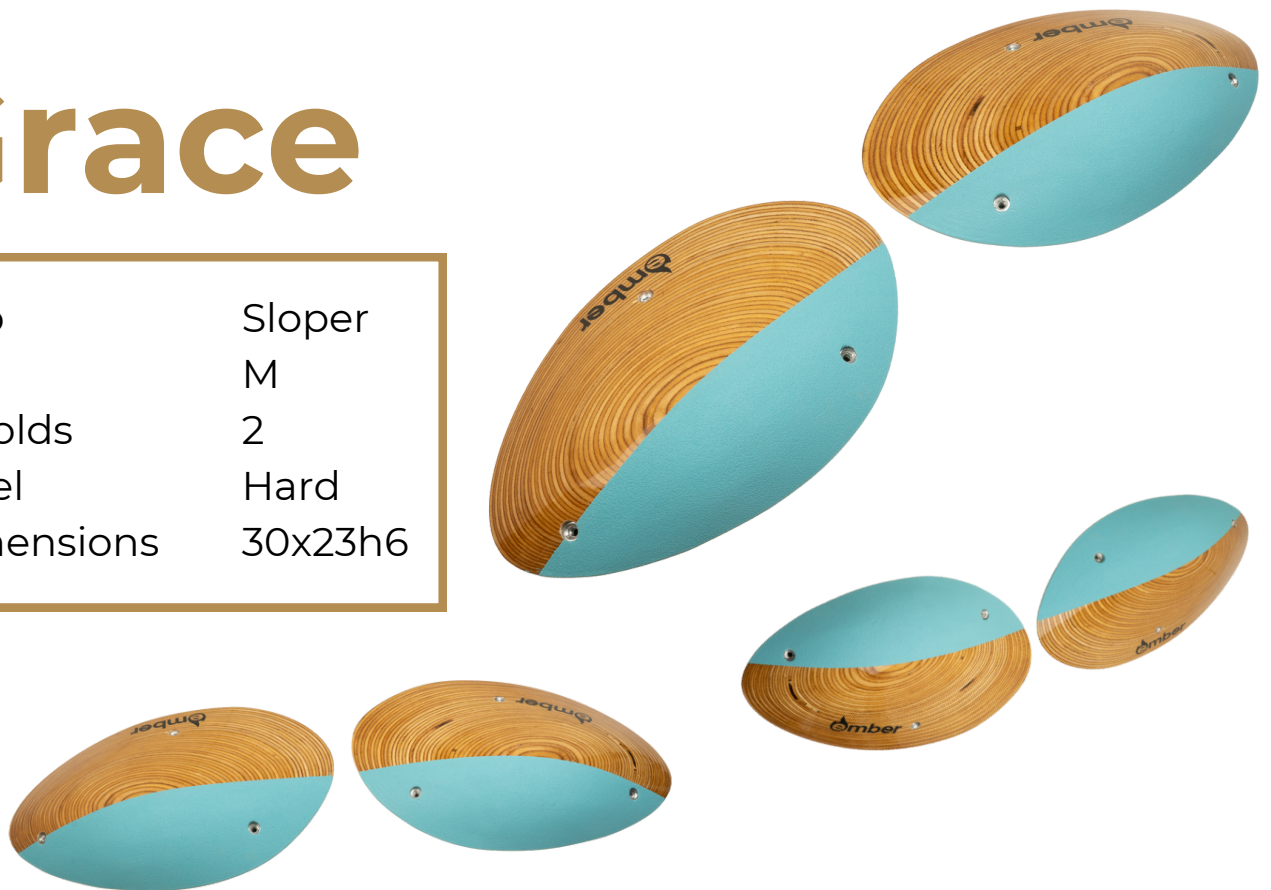
Daisy

Grip	Crimp
Size	M
# Holds	2
Level	Hard
Dimensions	34x24h4



Grace

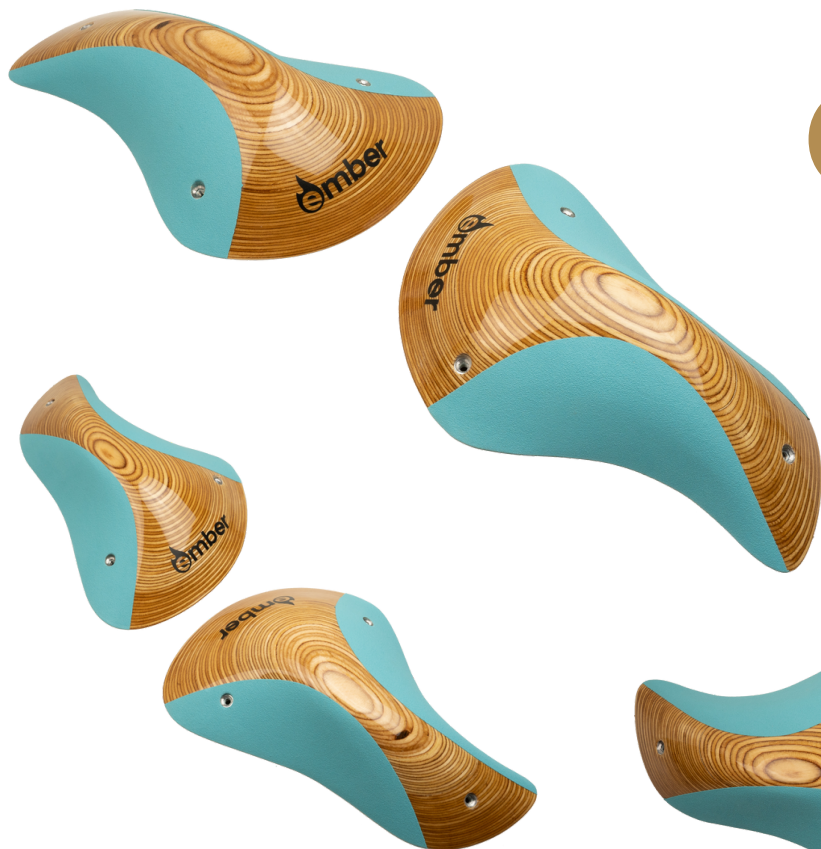
Grip	Sloper
Size	M
# Holds	2
Level	Hard
Dimensions	30x23h6



Hazel

Grip	Crimp
Size	S
# Holds	2
Level	Easy
Dimensions	33X18h4





Caroline

Grip	Pinch
Size	S
# Holds	2
Level	Hard
Dimensions	31x23h7



Clara

Grip	Crimp
Size	S
# Holds	2
Level	Hard
Dimensions	28x17h4



Technology

Colors



Black



Red



Magenta



Lilac



Purple



Turquoise



Blue



Green



Orange



Yellow



White



Custom

Material

All Magic Wood holds are hand-made from top quality birch plywood.

Grip

Ember Holds' grip is made of multiple layers of calibrated quartz, with added durability provided by first choice epoxy resin.

Hollowback

All Magic Wood holds size M and above are hollowbacked, and thus among the lightest wood holds on the market.



Safety & Maintenance

Fastening

All holds come with stainless steel inserts in every fastening point. Threaded inserts can be replaced if damaged or accidentally misplaced.

All holds have to be fastened to the wall using ALL points provided. Ember is not responsible for breakage or accidents caused by holds that are improperly fastened.

Set screws should be tightened using electrical screwdrivers, avoiding impact drills. Unnecessary tightening pressure will reduce the life of the holes.

Ember holds are flexible, but there is a limit to the degree of unevenness a hold can withstand, so pay particular attention when fastening to uneven surfaces, such as arêtes or corners.

Washing

All holds can be cold pressure washed up to 60 bar. Using hot water and higher pressure can cause accelerated loss of texture.

Holds have to be quickly dried after washing, avoiding to leave them soaking in stagnant water and possibly not under direct sunlight as to avoid progressive yellowing of the colour. PU holds are more subject to yellowing than wood and fiberglass textured holds.

Retexturing

Retexturing service for wood holds can be evaluated on a case-by-case basis. If you need retexturing contact us via email and we can arrange shipping and service..





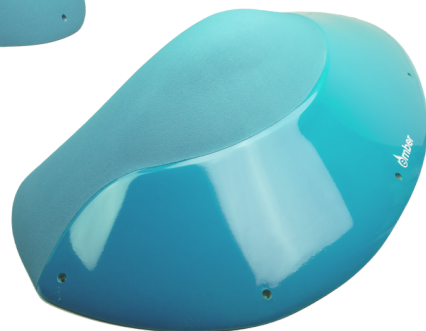
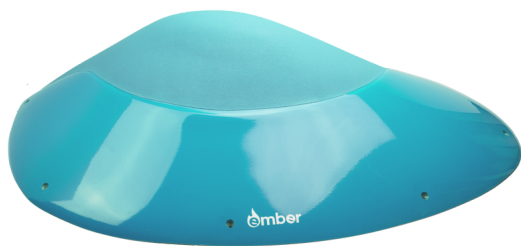
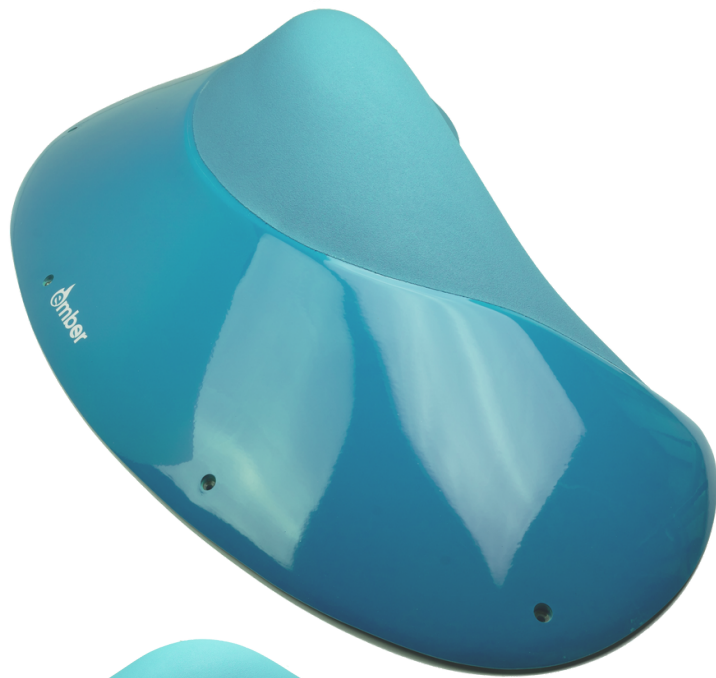
Flux
FG



ember

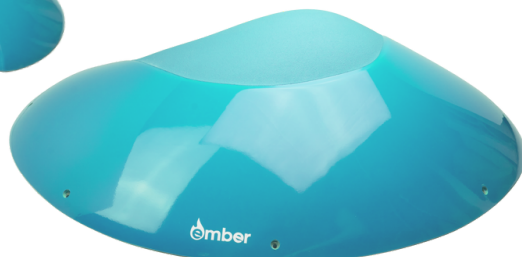
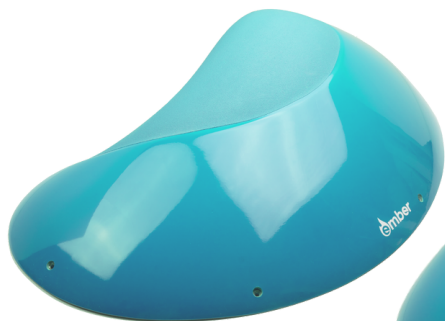
Macro 1

Grip	Sloper
Size	Macro
# Holds	1
Level	Medium
Dimensions	93x53h25



Macro 2

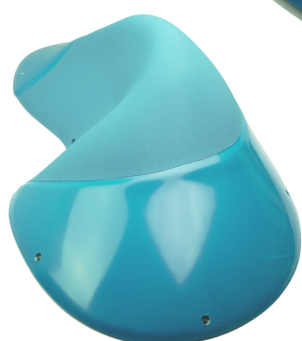
Grip	Sloper
Size	Macro
# Holds	1
Level	Medium
Dimensions	96x56h25





XL 1

Grip	Sloper
Size	XL
# Holds	1
Level	Hard
Dimensions	89x47h28



XL 2

Grip	Sloper
Size	XL
# Holds	1
Level	Easy
Dimensions	92x52h26



L1

Grip	Sloper
Size	L
# Holds	1
Level	Hard
Dimensions	58x32h14



L2

Grip	Sloper
Size	L
# Holds	1
Level	Easy
Dimensions	60x46h14





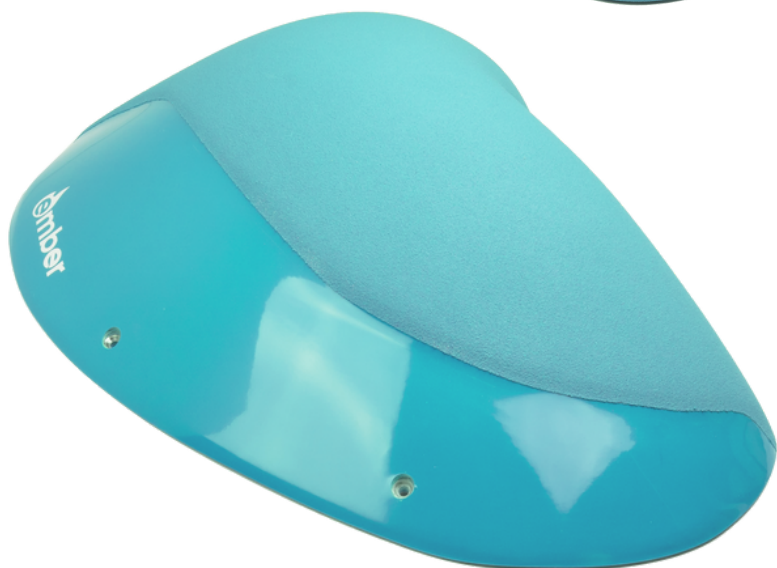
L 3

Grip	Sloper
Size	L
# Holds	1
Level	Medium
Dimensions	58x42h15



L 4

Grip	Sloper
Size	Macro
# Holds	1
Level	Easy
Dimensions	60x45h14



L 5

Grip	Sloper
Size	L
# Holds	1
Level	Easy
Dimensions	53x32h16



L 6

Grip	Sloper
Size	L
# Holds	1
Level	Medium
Dimensions	50x48h15



Technology

Colors



Black



Red



Magenta



Lilac



Purple



Turquoise



Blue



Green



Orange



Yellow



White



Custom

Material

All Flux FG holds are hand-made from top quality fiberglass.

Grip

Ember Holds' grip is made of multiple layers of calibrated quartz, with added durability provided by first choice epoxy resin.

Hollowback

All Flux Fiberglass holds are hollowbacked, and thus extremely flexible and among the lightest holds on the market.



Safety & Maintenance

Fastening

All holds come with stainless steel inserts in every fastening point. Threaded inserts can be replaced if damaged or accidentally misplaced.

All holds have to be fastened to the wall using ALL points provided. Ember is not responsible for breakage or accidents caused by holds that are improperly fastened.

Set screws should be tightened using electrical screwdrivers, avoiding impact drills. Unnecessary tightening pressure will reduce the life of the holes.

Ember holds are flexible, but there is a limit to the degree of unevenness a hold can withstand, so pay particular attention when fastening to uneven surfaces, such as arêtes or corners.

Washing

All holds can be cold pressure washed up to 60 bar. Using hot water and higher pressure can cause accelerated loss of texture.

Holds have to be quickly dried after washing, avoiding to leave them soaking in stagnant water and possibly not under direct sunlight as to avoid progressive yellowing of the colour. PU holds are more subject to yellowing than wood and fiberglass textured holds.

Retexturing

Retexturing service for fiberglass holds can be evaluated on a case-by-case basis. If you need retexturing contact us via email and we can arrange shipping and service..



Contact

www.emberholds.com

emberholds@gmail.com

IG: @emberholds

